



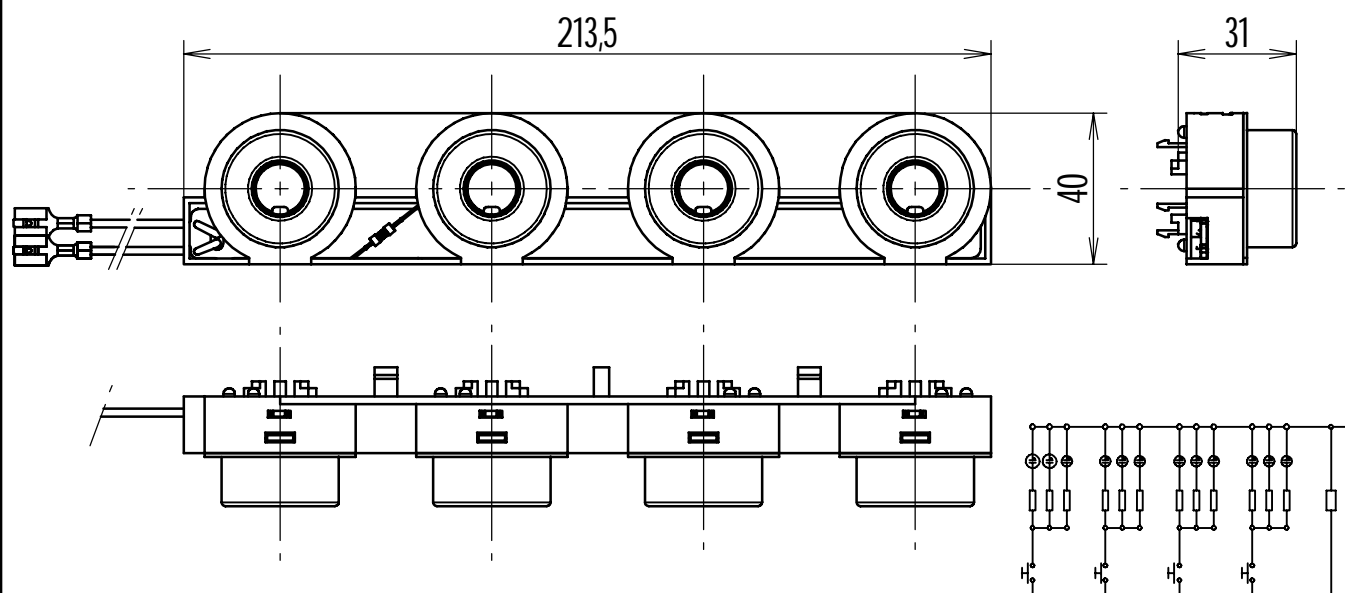
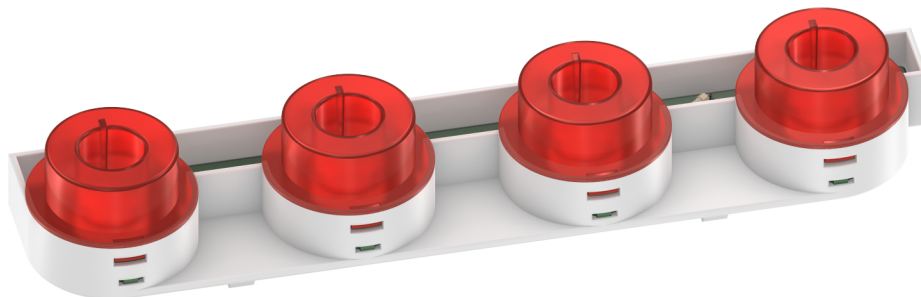
# electrónica de precisión, s.a.

C./ Galileu, 17 Polígono Industrial Can Estella  
E-08635 Sant Esteve Sesrovires  
BARCELONA

Tel.: +34 93 774 69 10  
Fax.: +34 93 774 65 00  
e-mail: epsa@edep.com  
http://www.edep.com



Switched  
Illumination for  
Knobs  
Code 8910131410



Tolerances unless otherwise stated:  $\pm 0.2$

Scale: 1:2

This product is an example of our design and production possibilities in the field of illumination. Custom designed for an electric oven manufacturer, the initial most important requirements were:

- 1) Low investments in tooling
- 2) Flexibility for alternative executions with only three or two panel knobs, alternatively without switching
- 3) Good illumination of customer's semitransparent existing knobs
- 4) Actuating of switching through the knobs themselves
- 5) No need of additional microswitches nor other types of expensive standard switches to switch on every knob
- 6) Good resistance to high temperatures
- 7) Good electric and fire resistance

After to our different proposals, the client ordered us the present product, which meets all requirements. The tool of the housing is constructed in such way, that different total lengths can be manufactured without need of different tools. The lighting and simple switching means are integrated in the housing and a printed circuit board. The different executions can be arranged, because of the low cost for changes on p.c.b.. The levers in the inner diameter of the circular difusers, where customer introduces the panel knobs, actuate the switches being displaced by those. Before submit product to client, our laboratory tested all prescribed parameters.